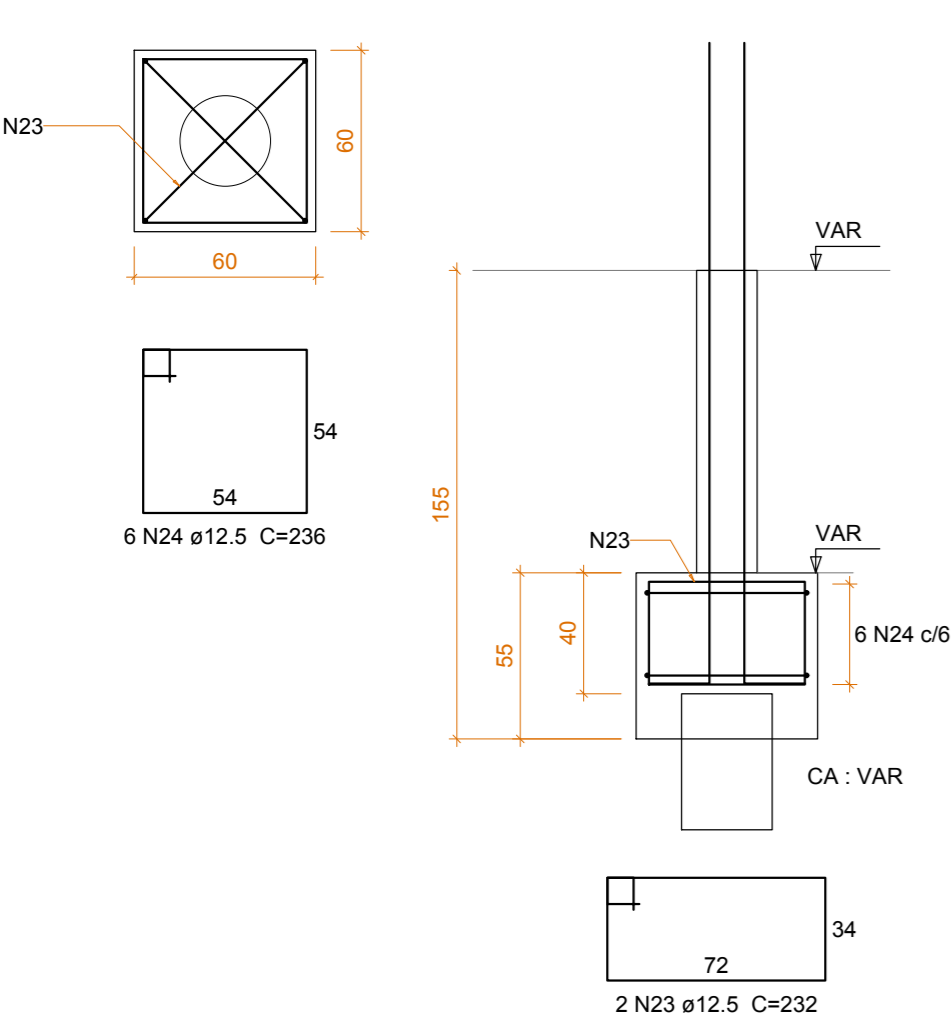


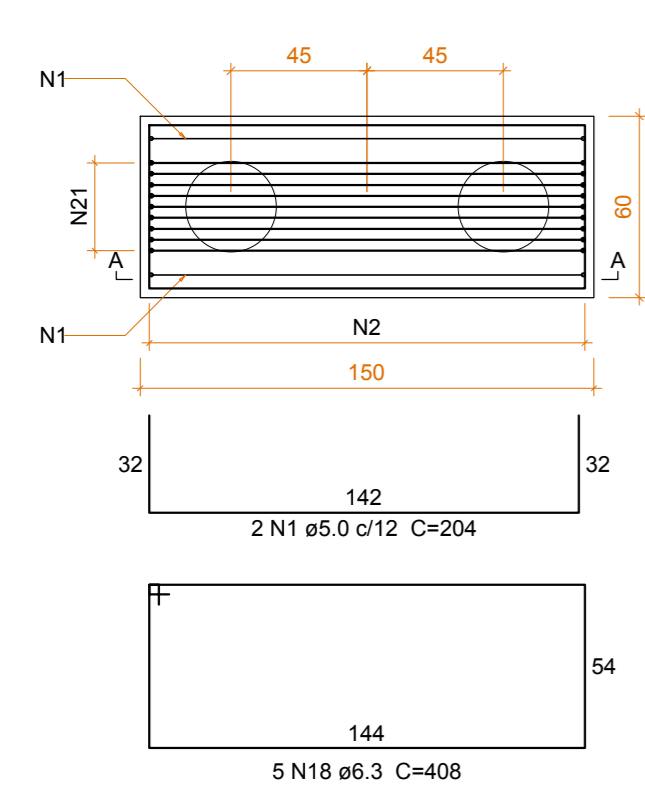
B2=B5=B7=B8=B9=B10=B11=B13=B16  
1xR30

PLANTA  
ESC 1:25



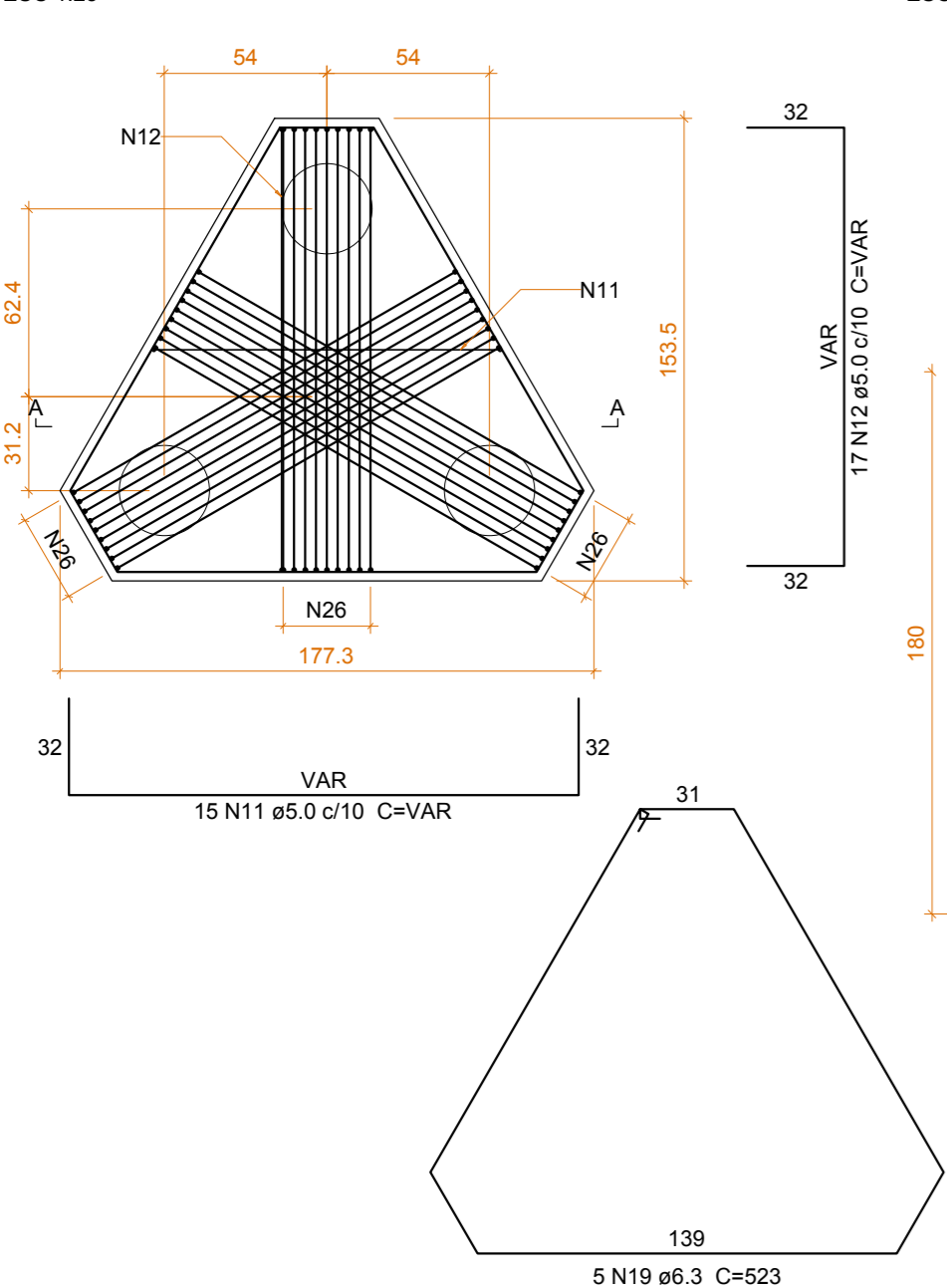
B1=B3=B14  
2xR30

PLANTA  
ESC 1:25

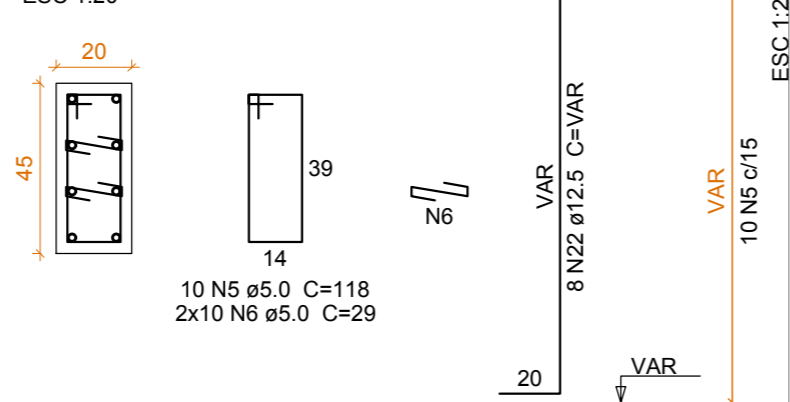


B4  
3xR30

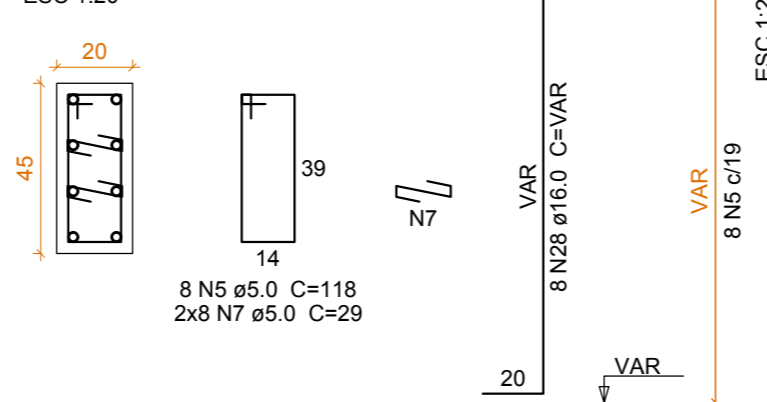
PLANTA  
ESC 1:25



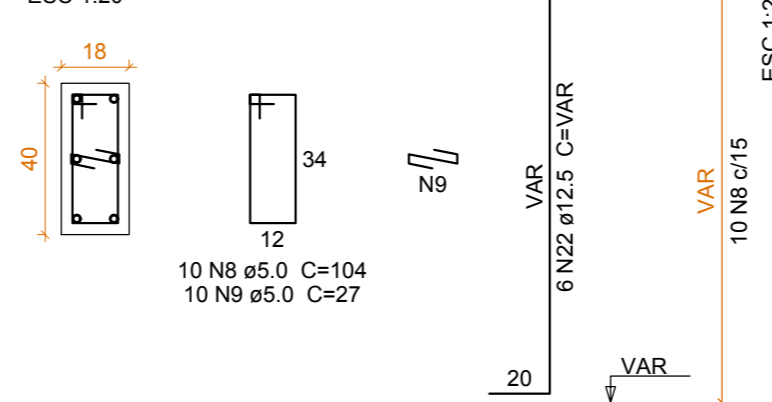
P2  
BALDRAME - L1  
ESC 1:20



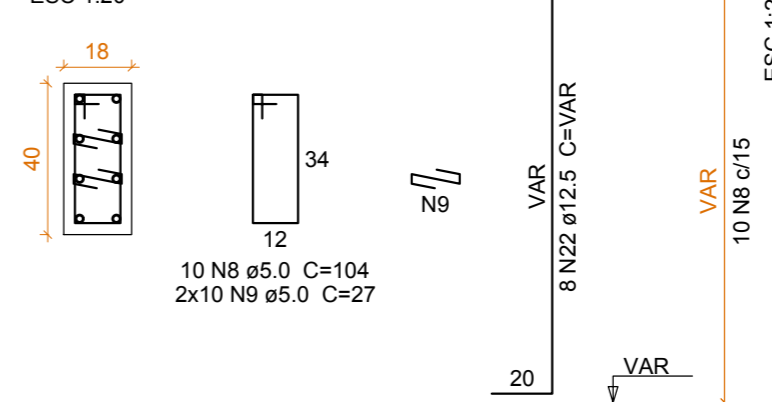
P5  
BALDRAME - L1  
ESC 1:20



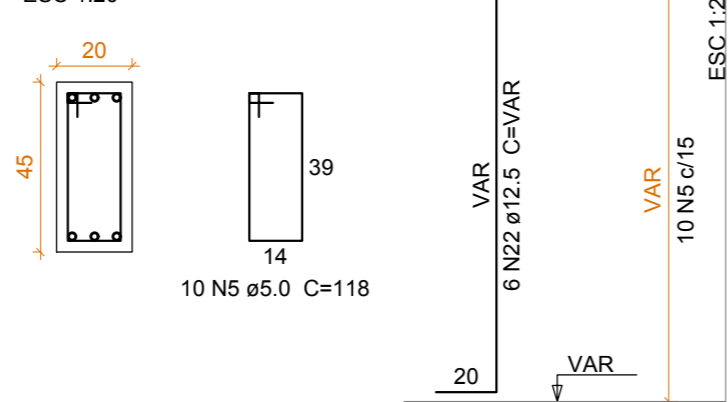
P7  
BALDRAME - L1  
ESC 1:20



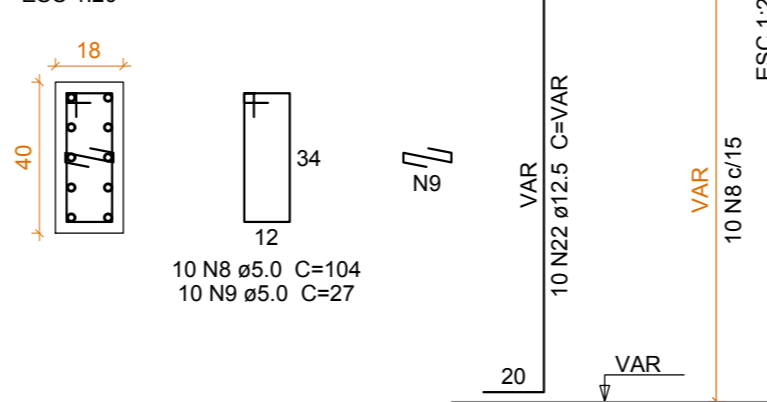
P8=P10  
BALDRAME - L1  
ESC 1:20



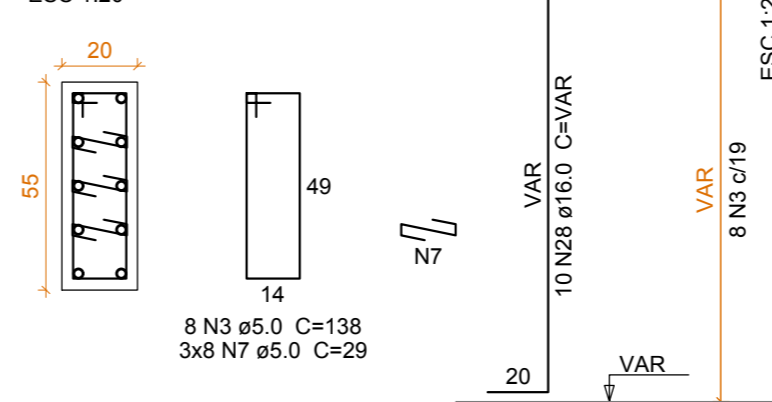
P9  
BALDRAME - L1  
ESC 1:20



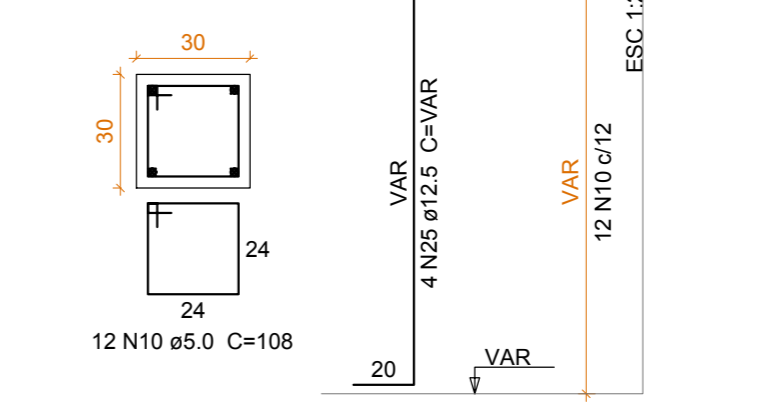
P11  
BALDRAME - L1  
ESC 1:20



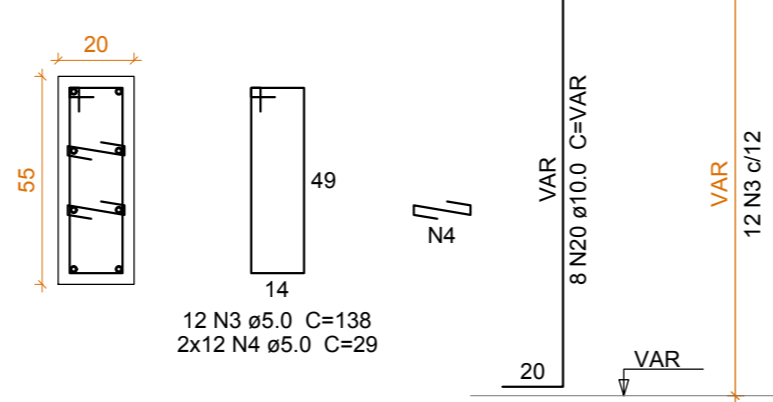
P13  
BALDRAME - L1  
ESC 1:20



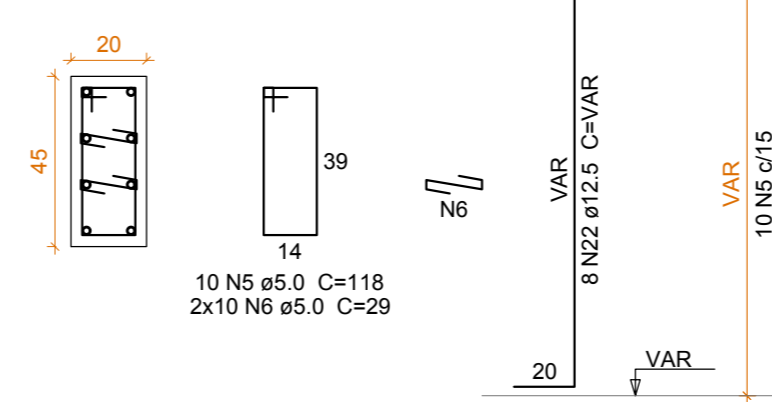
P16  
BALDRAME - L1  
ESC 1:20



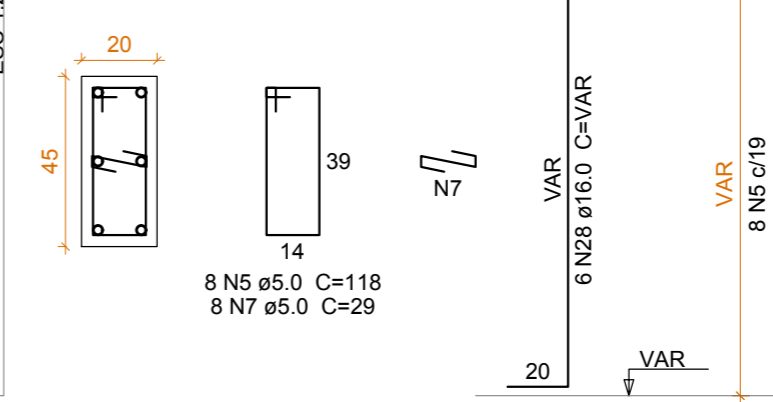
P1  
BALDRAME - L1  
ESC 1:20



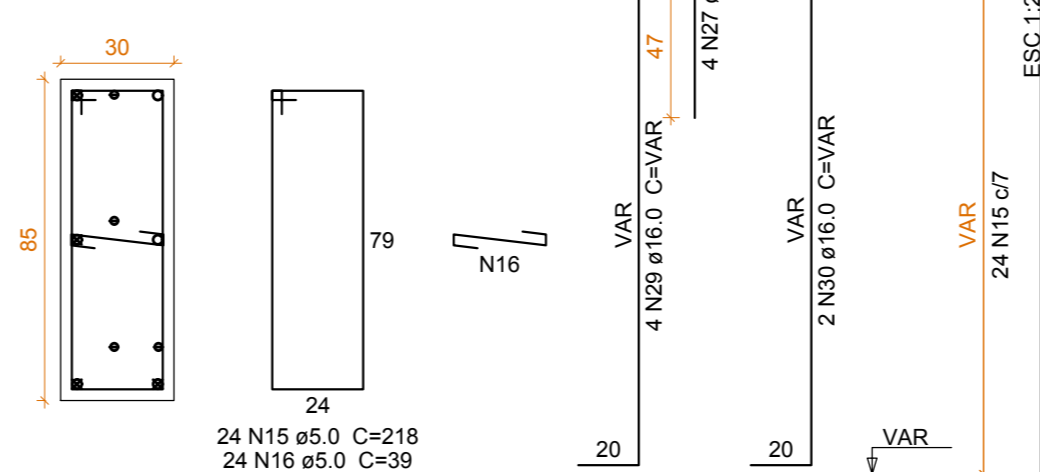
P3  
BALDRAME - L1  
ESC 1:20



P14  
BALDRAME - L1  
ESC 1:20



P4  
BALDRAME - L1  
ESC 1:20



Relação do aço

AÇO	N	DIAM (mm)	QUANT	C.UNIT (cm)	C.TOTAL (cm)
CA60	1	5.0	6	204	1224
	2	5.0	21	184	3864
	3	5.0	20	138	2760
	4	5.0	24	29	696
	5	5.0	46	118	5428
	6	5.0	40	29	1160
	7	5.0	48	29	1392
	8	5.0	40	104	4160
	9	5.0	60	27	1620
	10	5.0	12	108	1296
CA50	11	5.0	15	VAR	VAR
	12	5.0	17	VAR	VAR
	13	5.0	12	VAR	VAR
	14	5.0	12	VAR	VAR
	15	5.0	24	218	5232
	16	5.0	24	39	936
	17	6.3	21	153	3213
	18	6.3	15	408	6120
	19	6.3	5	523	2615
	20	10.0	8	VAR	VAR

Resumo do aço

AÇO	DIAM (mm)	C.TOTAL (m)	PESO + 10 % (kg)
CA50	6.3	119.5	32.2
	10.0	15.5	10.5
	12.5	412.3	436.9
	16.0	62.9	109.2
PESO TOTAL (kg)		407.9	69.2
CA50	588.7		
CA60	69.2		

Volume de concreto (C-25) = 6.40 m³  
Área de forma = 48.34 m²

1	Revisão 01 - Mudança na Escada	07/2017	RCB
0	Emissão Inicial	06/2017	RCB
Revisão	Descrição	Data	Responsável
AMFRI - ASSOCIAÇÃO DOS MUNICÍPIOS DA REGIÃO DA FOZ DO RIO ITAJAÍ Rua Luiz Lopes Gonzaga, nº 1655 - Bairro São Vicente - Itajaí-SC - CREA/SC nº 050968-0			
Estado de Santa Catarina BOMBEIRO MILITAR DE SANTA CATARINA			
Data Junho/2017	Projeto ESTRUTURAL	Conteúdo da folha Armação dos blocos 1 de 2	
Escala Indicada	AMPLIAÇÃO DO 7º B.M EM ITAJAÍ	Estatística	
Arquivo -	Local Av Sete de Setembro, 1878 Bairro Fazenda - Itajaí	Área a construir: 870,90m²	
Desenho Rafael B.	7º Batalhão de Bombeiro Militar em Itajaí / SC		Projeto
ART -	Comandante do 7º B.B.M.		Rafael Calistro Borba
Folha 02/21			Eng Civil - CREA SC 093.243-9